

# Data for Environmental Justice

NYC Climate Knowledge Exchange

13 November 2024

# Agenda

Climate Knowledge  
Exchange: Data for  
Environmental Justice

---



- 
- 01 | EJNYC Overview
  - 02 | GIS Equity Strategies
  - 03 | Mapping Tool Demo
  - 04 | Audience Participation
  - 05 | Q&A

# The Environmental Justice NYC (EJNYC) Initiative

In 2017, the City of New York passed Local Laws 60 & 64 requiring the City to assess environmental equity issues and develop a plan to incorporate environmental justice (EJ) considerations into the fabric of City decision-making. **This legislation focuses on three core deliverables:**



**EJNYC  
Report**



**EJNYC Mapping  
Tool**



**EJNYC  
Plan**

# EJNYC Report

# EJNYC Report: Process & Goals

## The EJNYC Report's development process:

1. MOCEJ and the EJ Advisory Board held public meetings and solicited thousands of public comments to inform the public scope for the report.
2. MOCEJ worked with the EJ Advisory Board and the Interagency Working Group to develop the EJNYC Report using a mixed methods approach that included quantitative and spatial analysis of various EJ indicators, literature reviews, focus groups, interviews, and targeted public surveys.

## Goal 1

To study the environmental burdens affecting low-income communities and communities of color, as well as disparities in environmental benefits.

### Distributional Equity:

Programs and policies resulting in the fair distribution of benefits and burdens across all segments of a community, prioritizing those with the greatest need.

## Goal 2

To study the extent to which City processes meaningfully involve and take direction from New Yorkers, particularly those in EJ communities.

### Procedural Equity:

Inclusive, accessible, and authentic engagement and representation in processes to develop or implement programs and policies.

# EJ Areas & Disadvantaged Communities

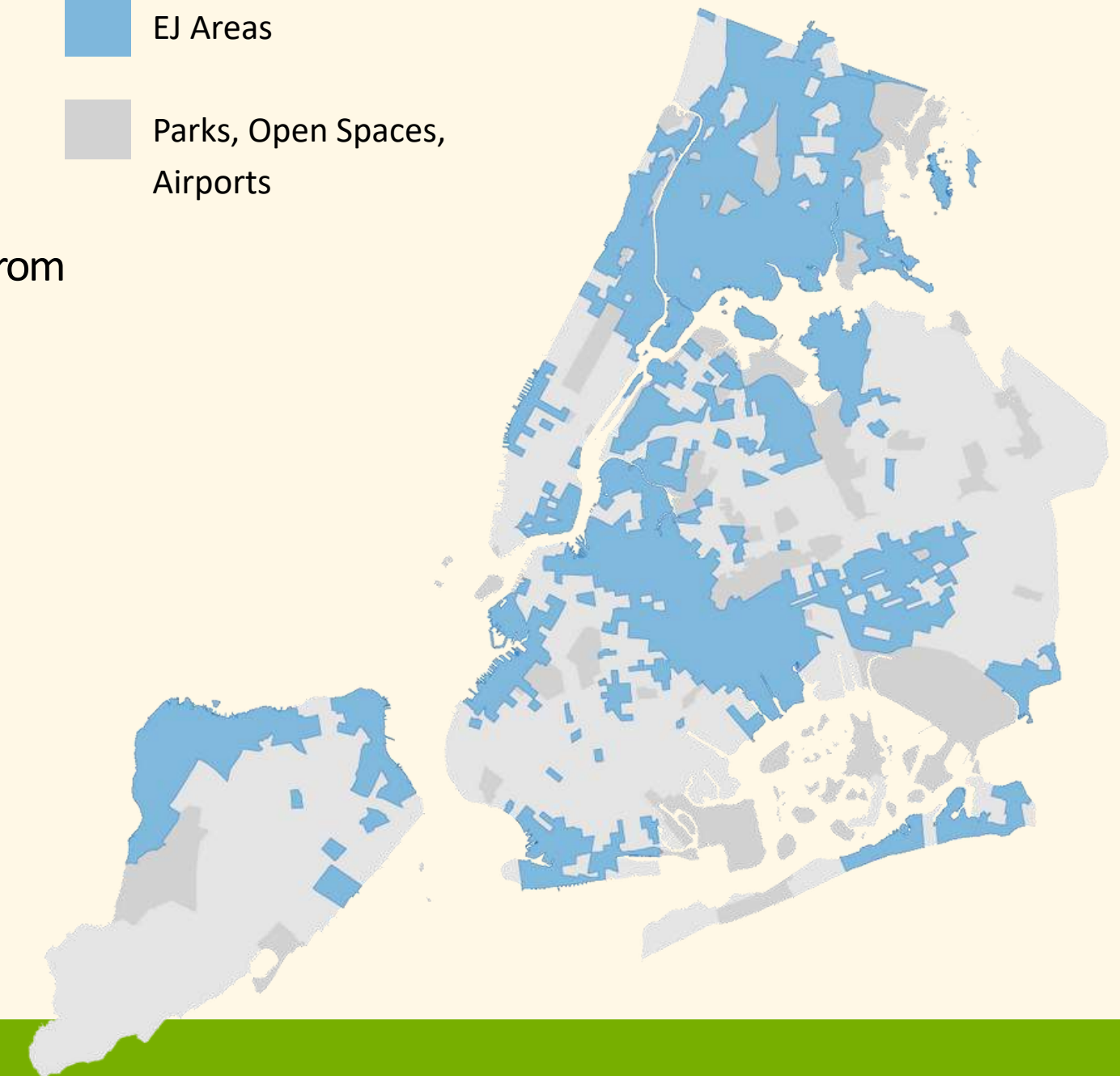
## DAC Overview

The EJNYC report identifies EJ areas using the **NY State's DAC Criteria**, which:

- Uses 45 indicators representing environmental burdens or climate change risks, or population characteristics and health vulnerabilities.
- Developed by the NY State Climate Justice Working Group to ensure frontline communities benefit from the implementation of the NY State's Climate Act

## DAC Criteria Constraints

- Regional Ranking:
  - Ensures greater state-wide distribution, excludes hundreds of NYC tracts
- Inappropriate Indicators
  - Not all indicators make sense for NYC's unique urban context (e.g., housing vacancy rates)
- Missing Criteria
  - Critical local data has not been incorporated (e.g., pluvial flooding)



**45%**

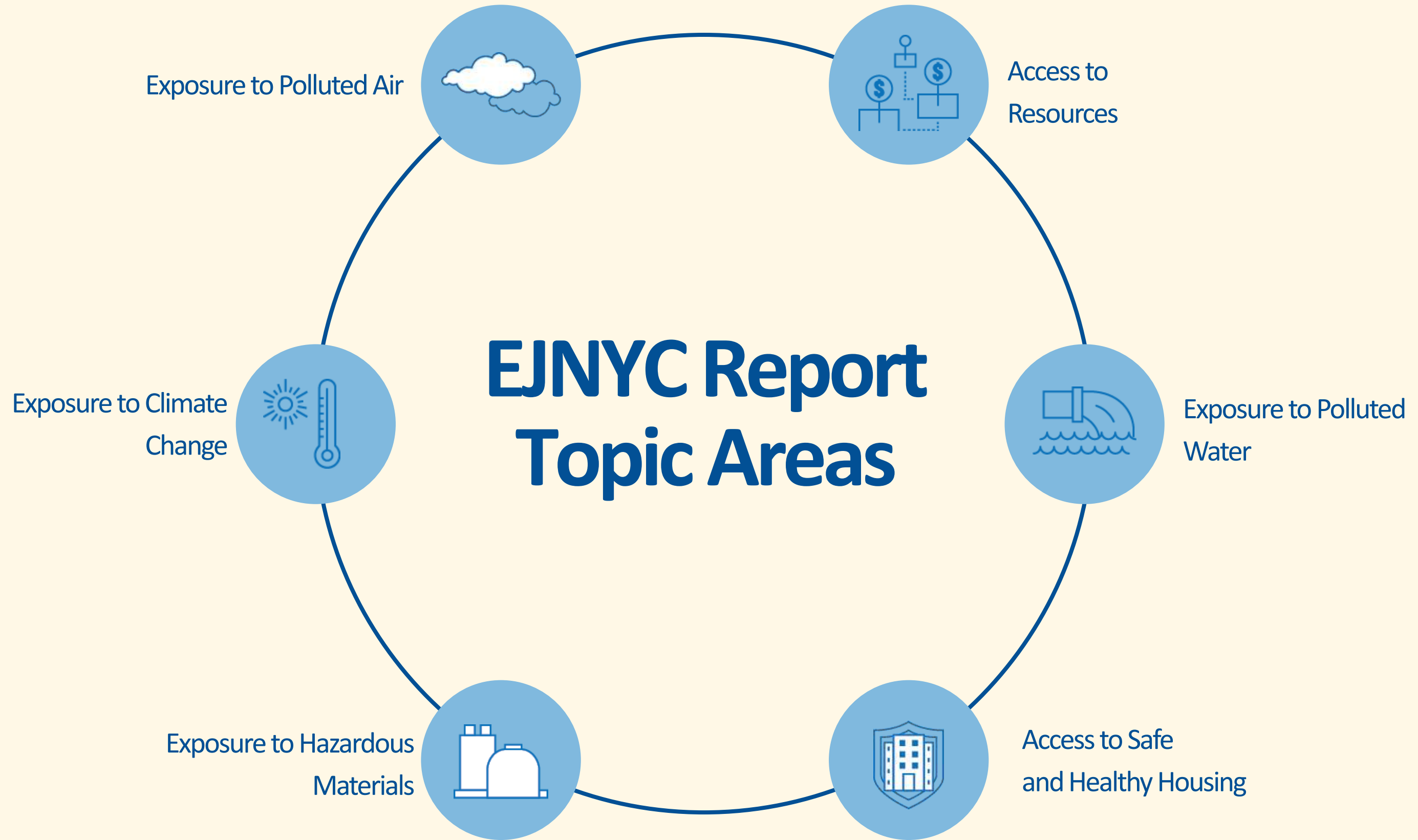
of NYC's census tracts  
are EJ Areas

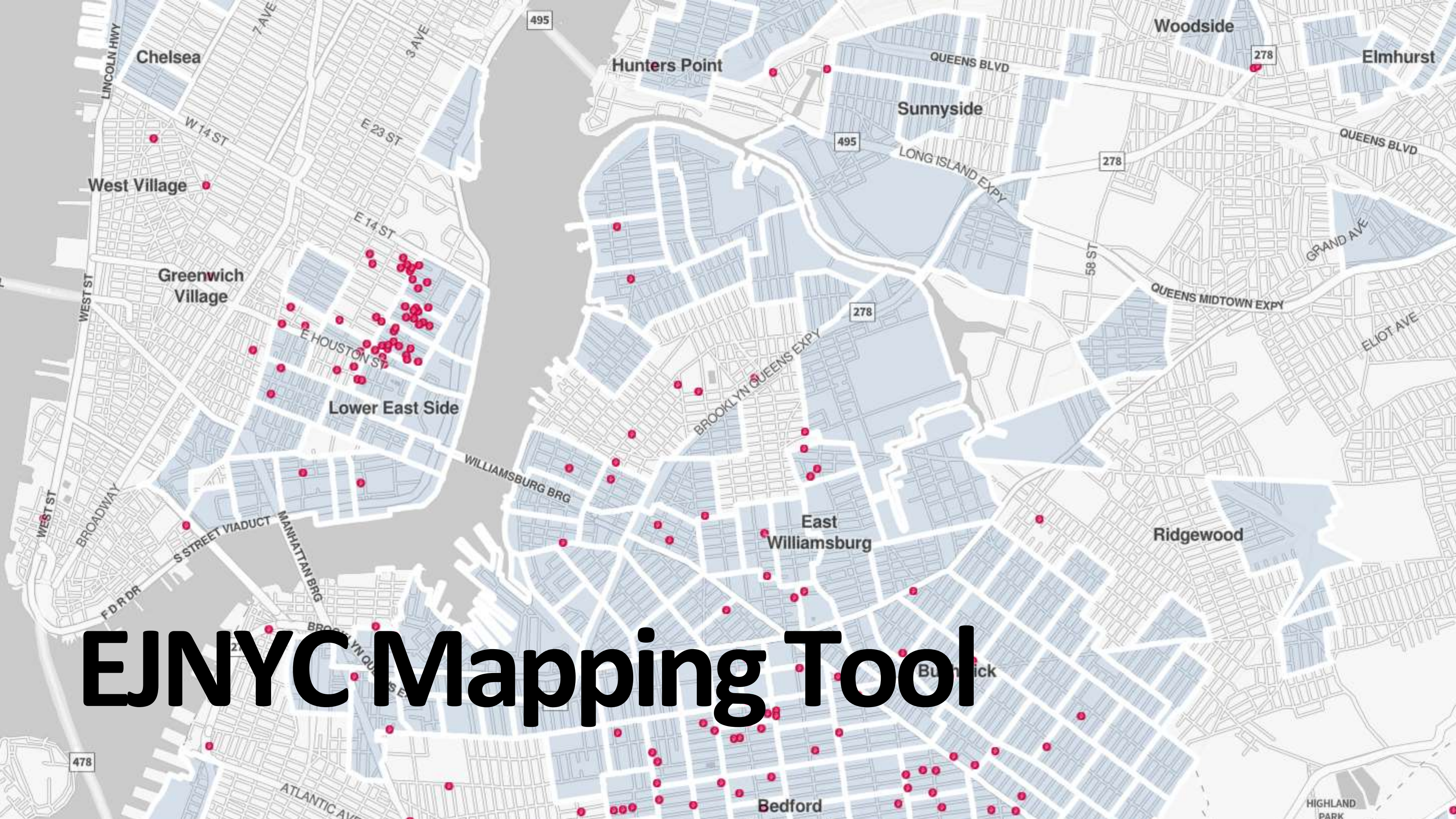
**49%**

of NYC's population live  
in EJ Areas

**59%**

of NY State's DACs are in  
New York City

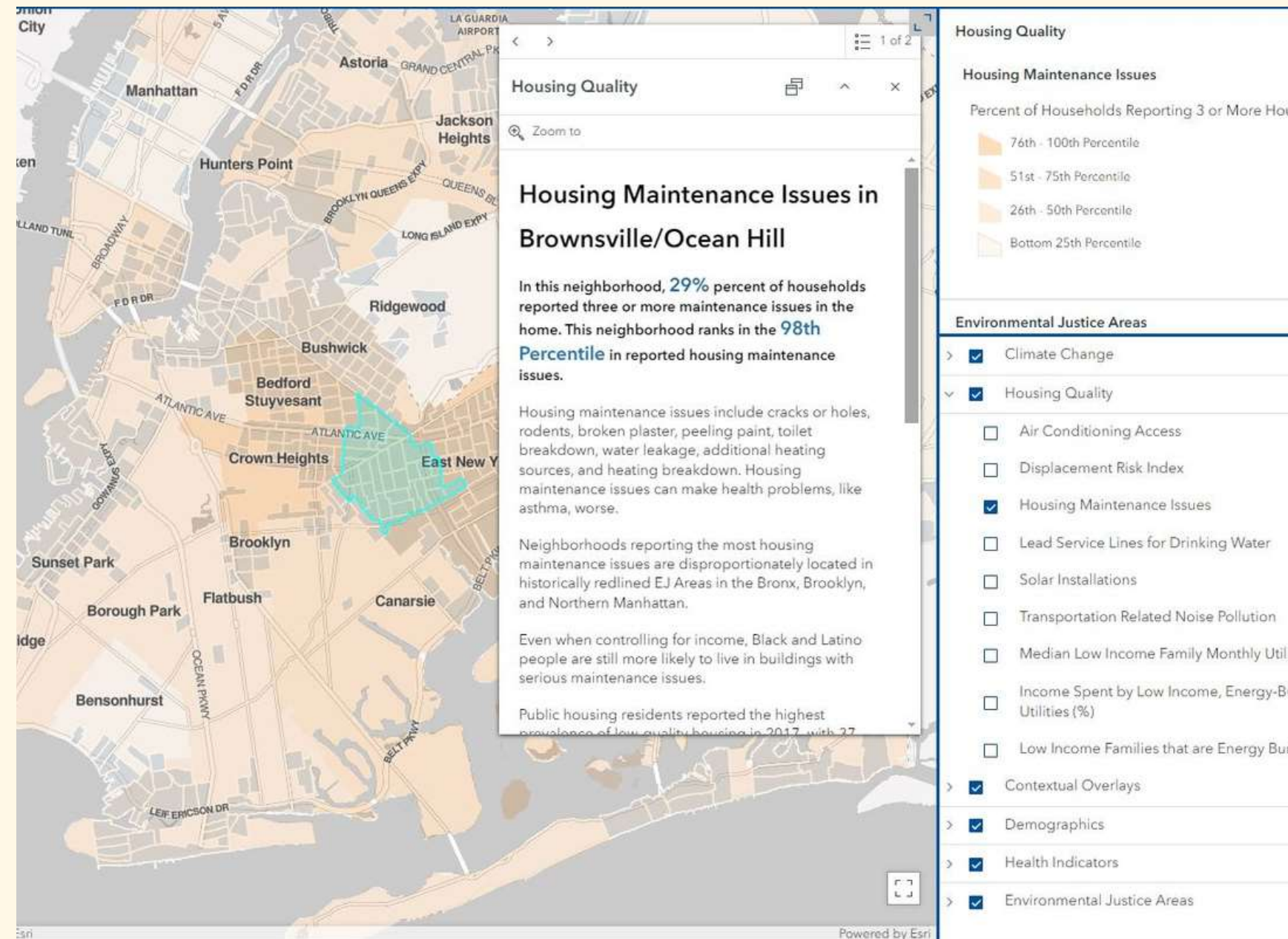




# EJNYC Mapping Tool



# EJNYC Mapping Tool



## What's In It?



115 data layers relevant to understanding EJ concerns. Data sets were sourced from city, state, federal, non-profit, and private sources and processed into a suitable format for GIS.

- Pop-up content with interpretive information embedded within all layers
- All data sets can be downloaded directly from the tool

Includes new maps displaying data previously unavailable to the public:

- Flood Vulnerability Index
- Energy Cost Burden
- Peaker Power Plants
- Last-Mile Facilities
- Chemically-Intensive Small Businesses

# EJNYC Plan



# EJNYC Plan

The EJNYC Plan will identify potential citywide initiatives for promoting EJ and provide recommendations for city agencies represented on the interagency working group.



## City-Wide Initiatives

Methods to:

- Promote **environmental justice**
- Encourage **greater public engagement** in decision-making that raises EJ concerns
- Promote **transparency and consistency** in the City's approach to EJ
- Promote **equitable distribution** and access to environmental benefits
- Improve **research and data collection** relating to human health and the environment

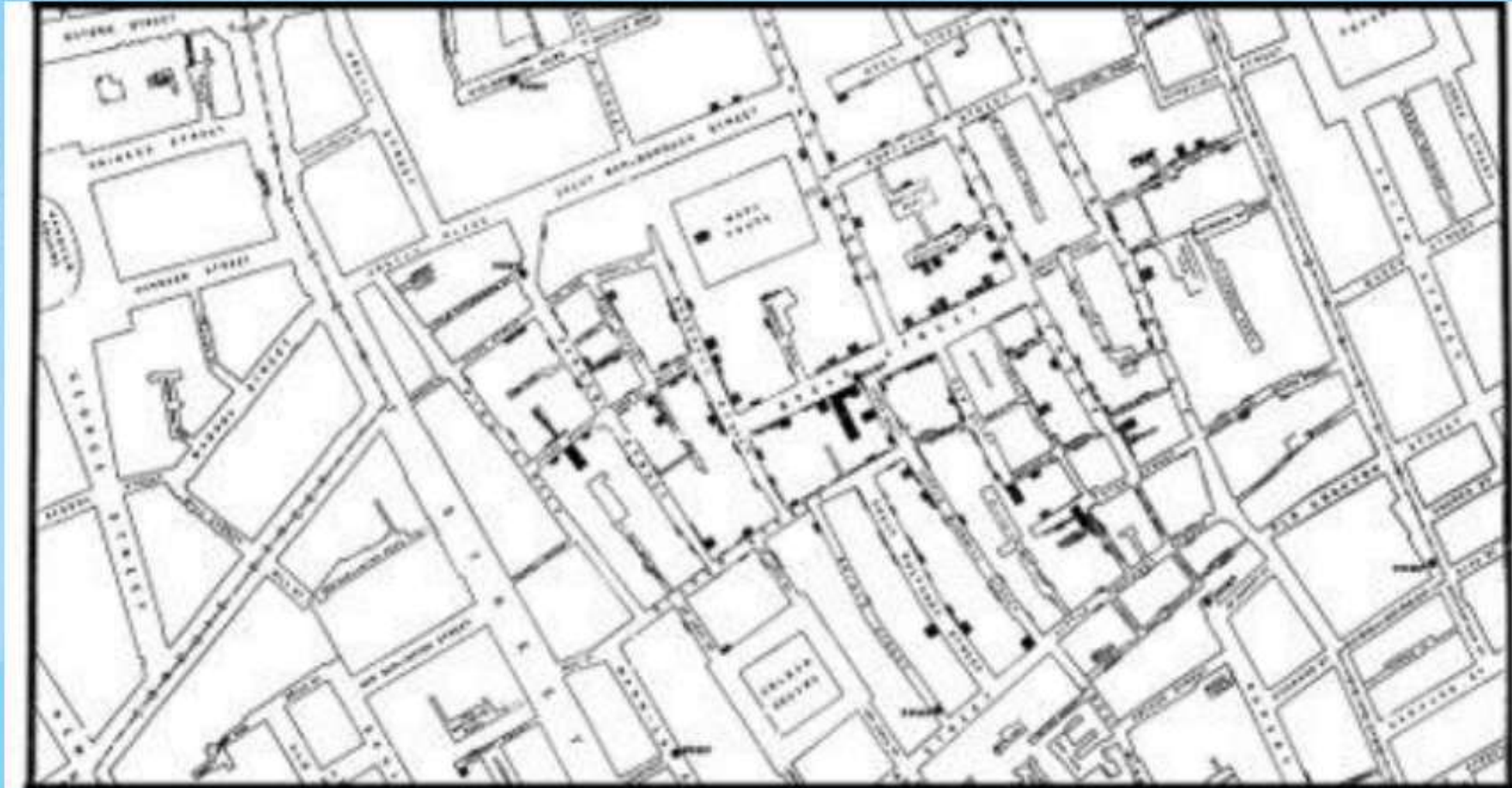


## Agency-Specific Recommendations

Changes to programs, policies, activities or processes that will promote EJ, including:

- **Capital projects** that address EJ concerns or provide environmental improvements to EJ Areas
- **Enforcement actions** that can be strengthened or expanded to address EJ concerns
- **Promote public participation and transparency** in agency decision-making

# Origins of Spatial Analysis



John Snow's Map of the Cholera Outbreak of 1854



A replica of the pump commemorating the outbreak and John Snow's investigation of it.

# Four Technology Tenets

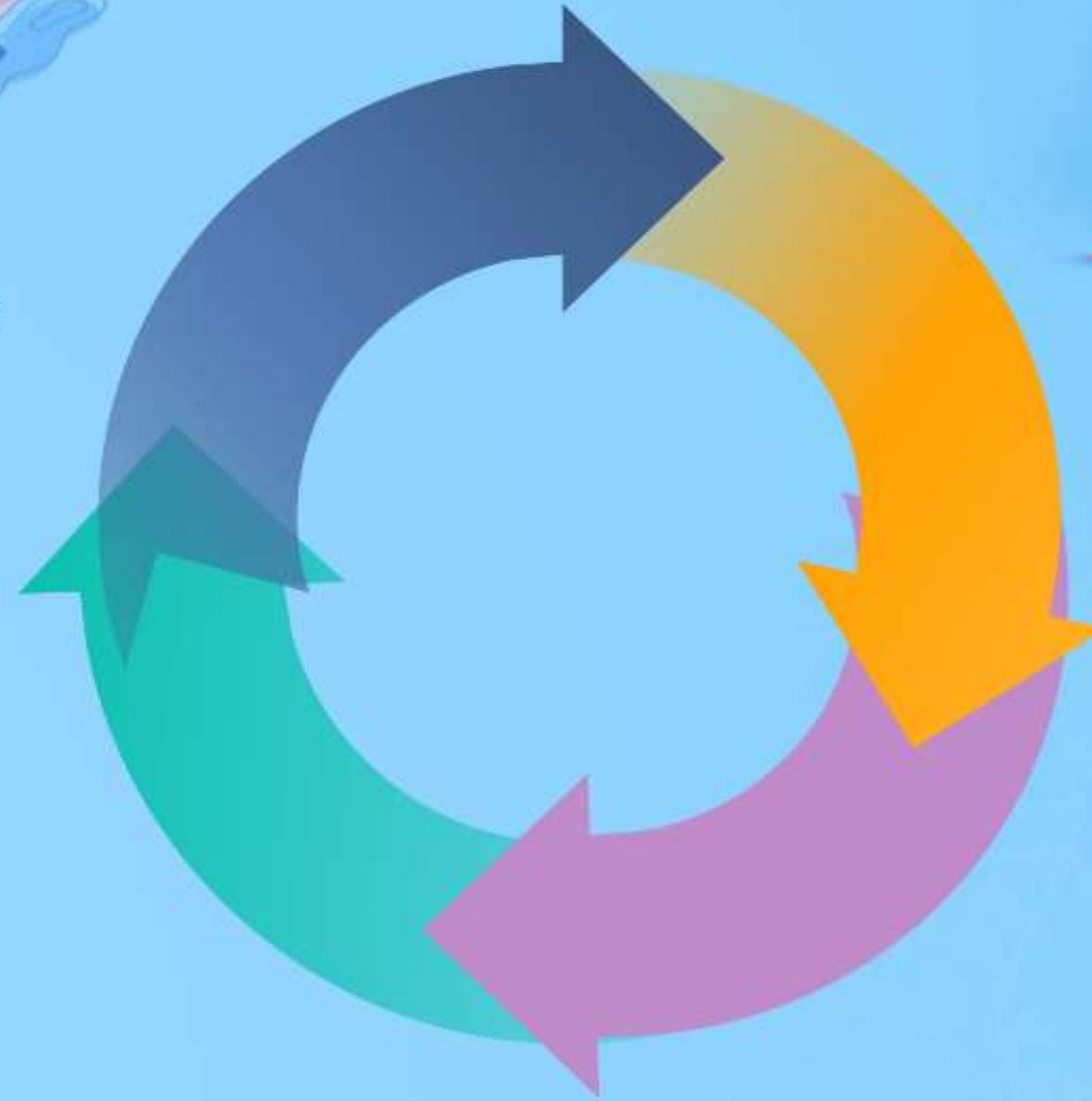
GIS for Environmental Justice & Equity



**Step 1: Understand Your Community**



**Step 4: Measure Your Impact**



**Step 2: Create a Location Strategy**



**Step 3: Operationalize Your Plan**

# Initiate Your Equity Strategy

Utilize Esri Tools for Your Strategy

## STEP 1

### Understand Your Community

ArcGIS StoryMaps



Esri Maps for Public Policy

ArcGIS Living Atlas



ArcGIS Business Analyst



## STEP 2

### Use a Location Strategy



ArcGIS Spatial Analyst



ArcGIS Solutions



ArcGIS Online

## STEP 3

### Operationalize Your Work



ArcGIS Pro



ArcGIS Community Analyst



Social Equity Analysis Solution

## STEP 4

### Measure Impact



Police Transparency Solution



ArcGIS Field Maps



ArcGIS Hub

# Building Climate Resilient Communities

Utilize Esri Tools to Take Action

## Steps to Climate Resilience

The U.S. Climate Resilience Toolkit offers a framework to help communities systematically consider and address their climate hazards. Communities can use this site to find resources to make quick progress in their journey towards greater resilience.

Steps to Resilience

See what others have done



- Understand Exposure
- Vulnerability & Risk
- Investigate Options
- Prioritize & Plan
- Take Action

## Vulnerability Assessments

Calculating risk and vulnerability

## Resiliency Planning

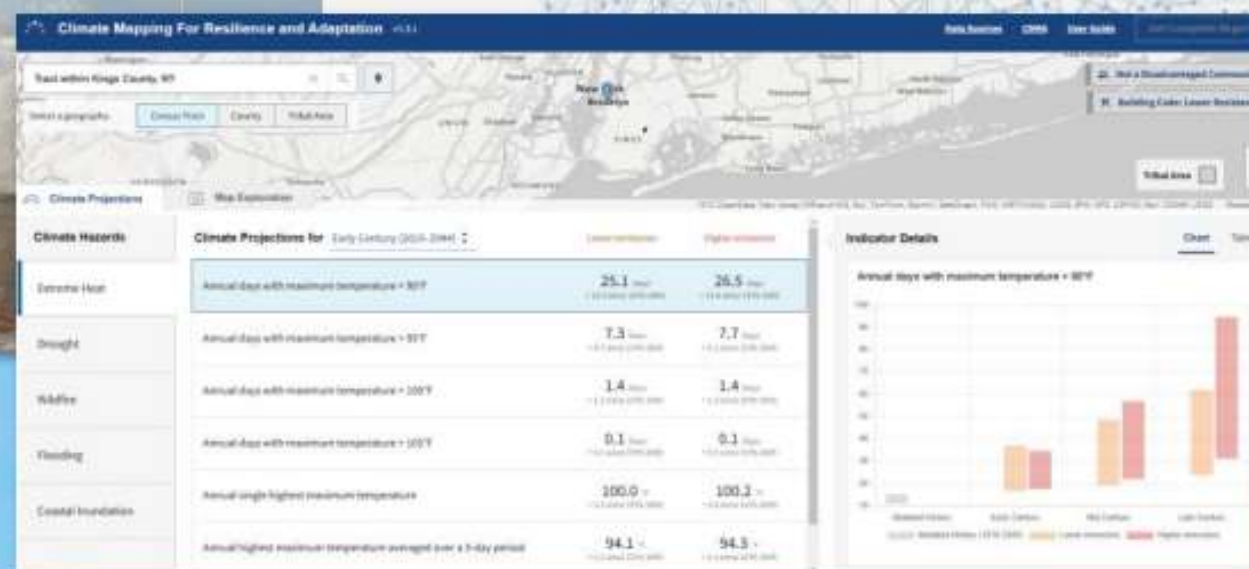
Prioritizing projects & initiatives

## Climate Policy

Informing data driven climate policies

## Emergency Response

Deploying and connecting resources to impacted communities



# Climate Mapping Applications in NYC

## NYCHA Decarbonization



## Finding Cooling Centers in NYC

**NYC Cool Options**  
Beat the Heat any time with NYC Cool Options

**FIND A LOCATION**  
Find address or place [input] [Nearby]

**NYC Cool Options**  
When it's very hot, air conditioning will help keep you safe. If you don't have air conditioning, find a cool place to visit nearby, like a friend's place, a mall, museum, coffee shop, library, or an NYC cooling center. When it's not so hot but it's still hot, you can also cool off at parks, areas with shade, sprinklers, or pools.

Cooling center locations can also be found by calling 311 NYS 212.639.0625 or TTY: 212.554.8125.

## Modeling NYC Storm Drainage Areas



## NYS Community Air Monitoring Initiative

**New York State Community Air Monitoring Initiative 2022-2023**

Improving Air Quality in Disadvantaged Communities

An pollution nears very communities. People living in disadvantaged communities, near traffic, transportation of goods, and areas with multiple commercial and industrial sources, are exposed to higher levels of air pollution. As a result, they may experience adverse health effects and quality of life impacts. Disadvantaged communities may also be more vulnerable and less able to adapt to the impacts of climate change. The Climate Justice Working Group includes environmental justice, potential climate change risk, and population and health vulnerability indicators to identify disadvantaged communities across the State. New York State is working to develop strategies to reduce local air pollution and increase climate resiliency in disadvantaged communities.

## MOUA Urban Agriculture Explorer HUB

**NYC Urban Agriculture Explorer HUB**

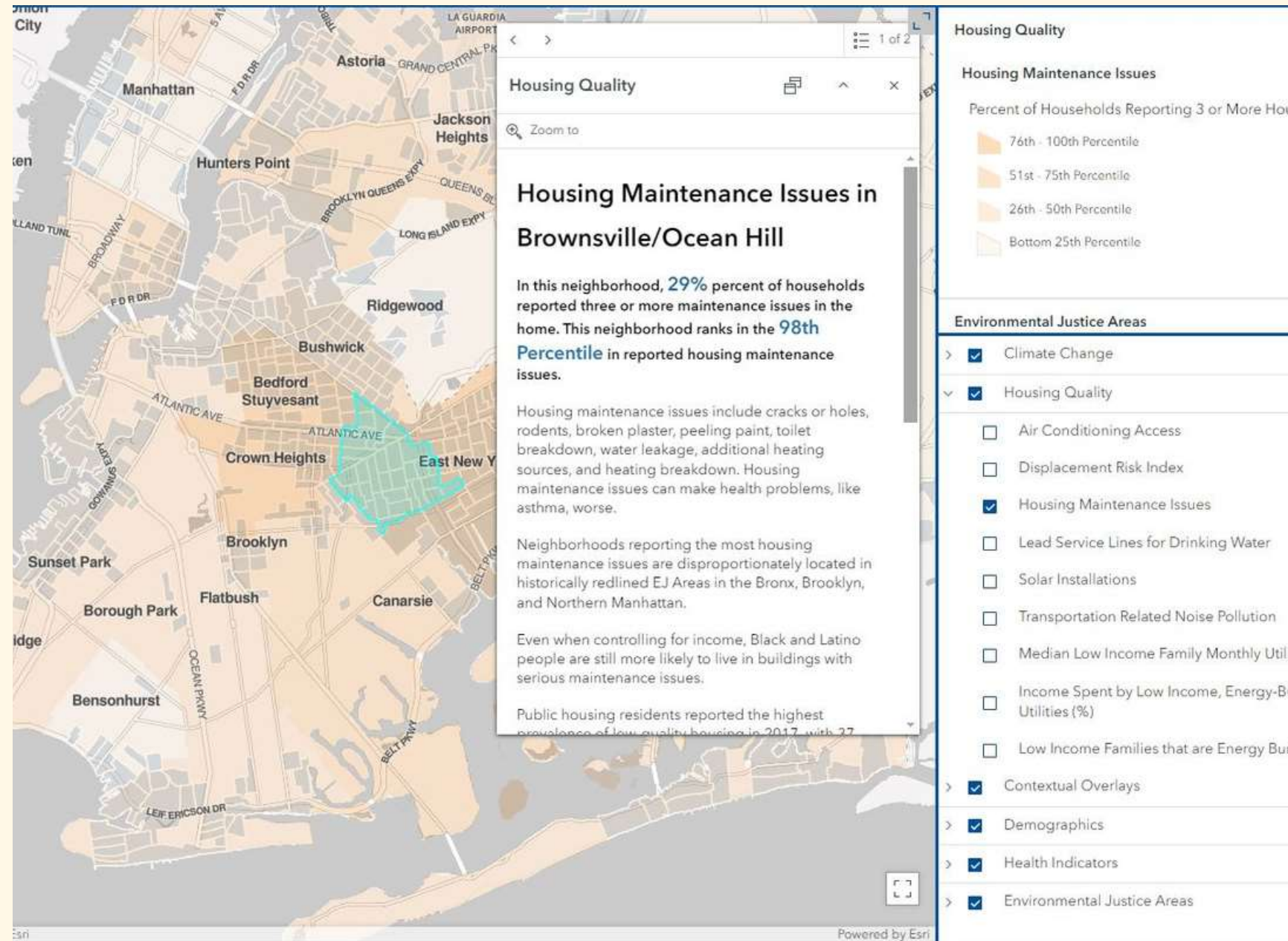
Urban Agriculture Sites  
**2,830**

Step 1: Discover  
Step 2: Learn More

Select a Location from Step 1 to Learn More



# EJNYC Mapping Demo



## Who can use it?

### Communities

Community members can use the EJNYC Mapping Tool to learn about local environmental stressors, and other related information.

### Advocacy Organizations

Non-profits and community-based organizations can leverage data from the EJNYC Mapping Tool to advocate for healthier environments.

### Government

City agencies and mayoral offices can use the EJNYC Mapping Tool to inform engagement, planning, and decision-making.

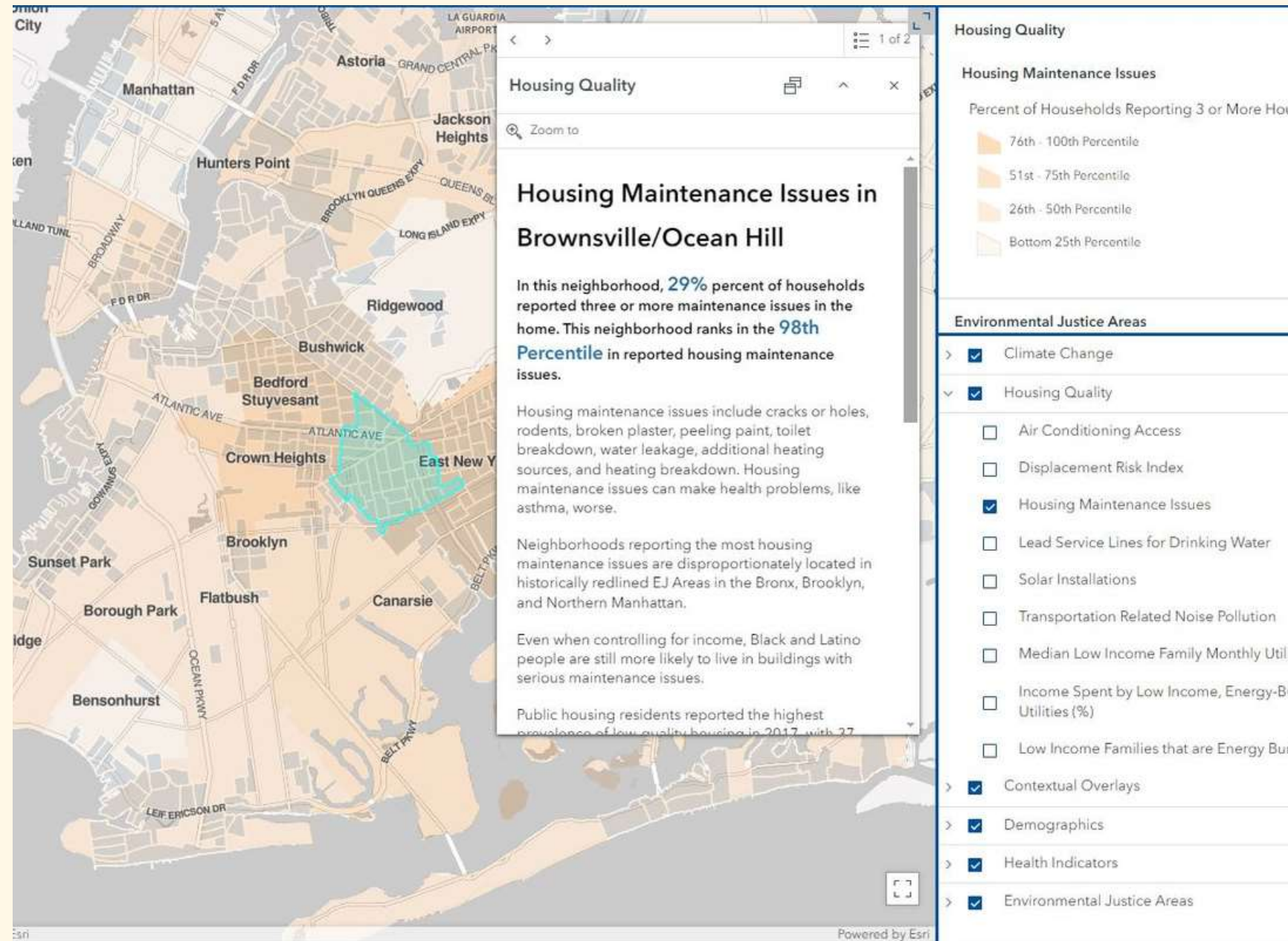
### Researchers

Researchers studying EJ can use the EJNYC Mapping Tool to easily identify and download datasets for further analysis.

[Access the Mapping Tool Here](#)

# Audience Participation

## Prompts for Different Audiences:



**Communities**

Explore different data layers within your neighborhood or a neighborhood you work in. What's something new that you learned?

**Advocacy Organizations**

You're developing an advocacy campaign related to health equity and energy costs, what data layers can help you build your case?

**Government**

Identify a few areas in the city where a resilience hub, cooling center, or other resilience project could be most impactful. Tell us why using the tool.

**Researchers**

Identify two or more data layers that, when layered on top of one another, reveal a pattern you think is worth researching.

[Access the Mapping Tool Here](#)



**Thank You!**