



Mayor's Office of Climate &
Environmental Justice



Eric Adams
Mayor

Climate Strong Communities

CORONA
PUBLIC WORKSHOP #1
16 December 2023



one architecture



STARR WHITEHOUSE
Landscape Architects
and Planners PLLC

climate adaptation partners

Jacobs

MATRIXNEWORLD

Agenda

- 1 **INTRODUCTION & CONTEXT**
30 MIN
- 2 **NEIGHBORHOOD STORY
ACTIVITY**
20 MIN
- 3 **NEIGHBORHOOD SPECIFIC
CLIMATE THREATS ACTIVITY**
20 MIN
- 4 **CONCLUSION & NEXT STEPS**
10 MIN

1

Climate Strong Communities

Introduction & Context

“Climate-Strong Communities, a new citywide climate strategy, will boost resiliency throughout the five boroughs especially in high need areas that face deeper impacts as a result of climate change. Equity and environmental justice are essential to our climate strategy. For far too long communities have been left behind based on their zip codes and economics. Climate-Strong Community initiative will lead to model projects that protect these neighborhoods and can be replicated across the entire five boroughs.”

Mayor Eric Adams

Hurricane Sandy 10th
Anniversary Remembrance



Climate Strong Communities Program Summary

Climate Strong Communities (CSC) will launch the next generation of equitable, multi-hazard, resiliency and sustainability projects.

- Develop a community-centered planning process by proactively engaging with stakeholders
- Maximize federal and state funding opportunities
- Invest in communities left unaddressed by limited Hurricane Sandy recovery funding
- Leverage existing resiliency and sustainability planning and capital commitments

Climate Strong Communities Year 1 Neighborhoods

Phase I Neighborhoods

Rainfall Flooding (2080s Extreme Flood)

- 10% Annual Chance Storm Nuisance (4 in - 1 ft)
- 10% Annual Chance Storm Deep/ Contiguous (>1 ft)
- 1% Annual Chance Storm Combined with 4.8 ft SLR

Coastal Surge Flooding (2080s Future Floodplain)

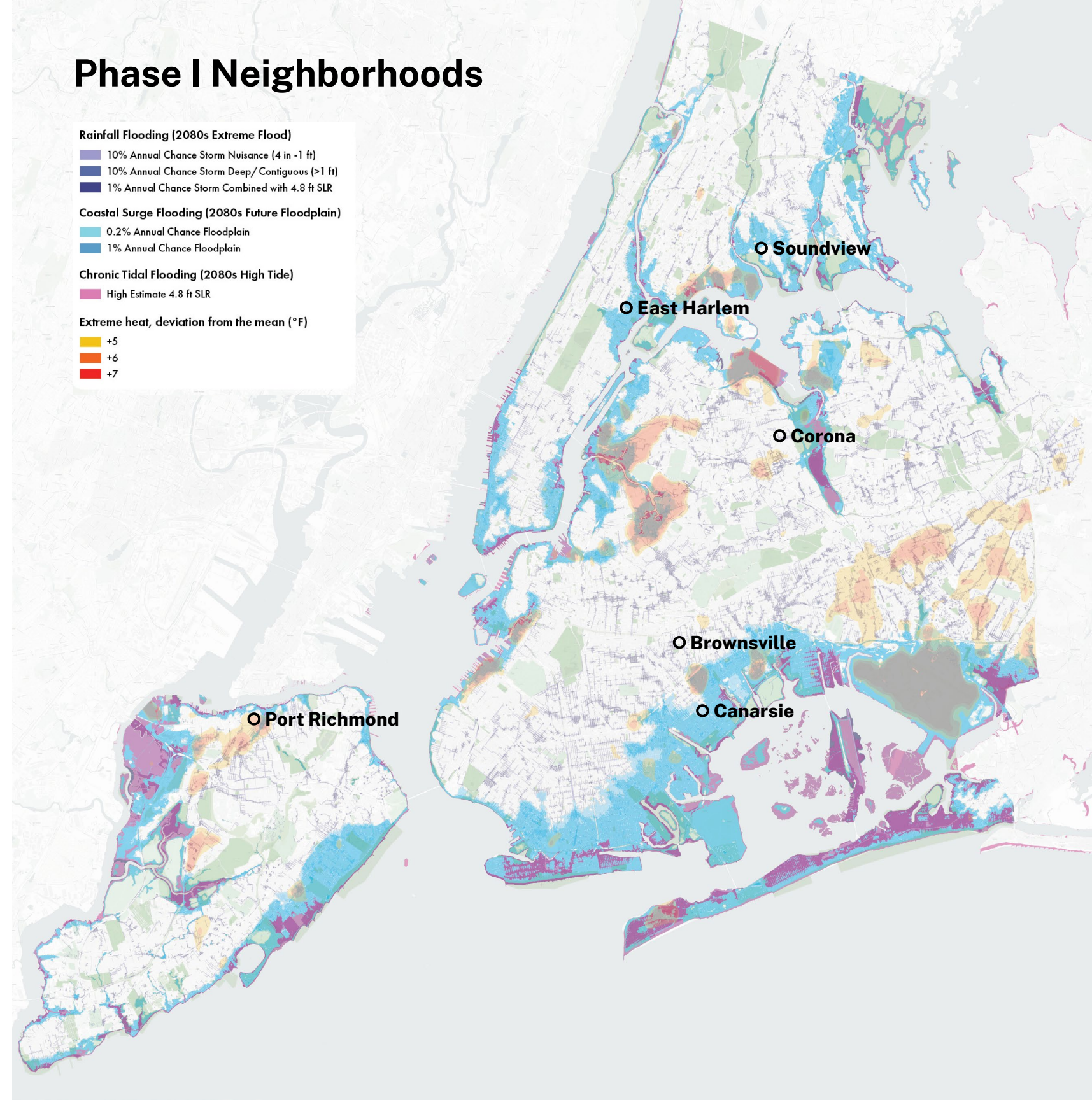
- 0.2% Annual Chance Floodplain
- 1% Annual Chance Floodplain

Chronic Tidal Flooding (2080s High Tide)

- High Estimate 4.8 ft SLR

Extreme heat, deviation from the mean (°F)

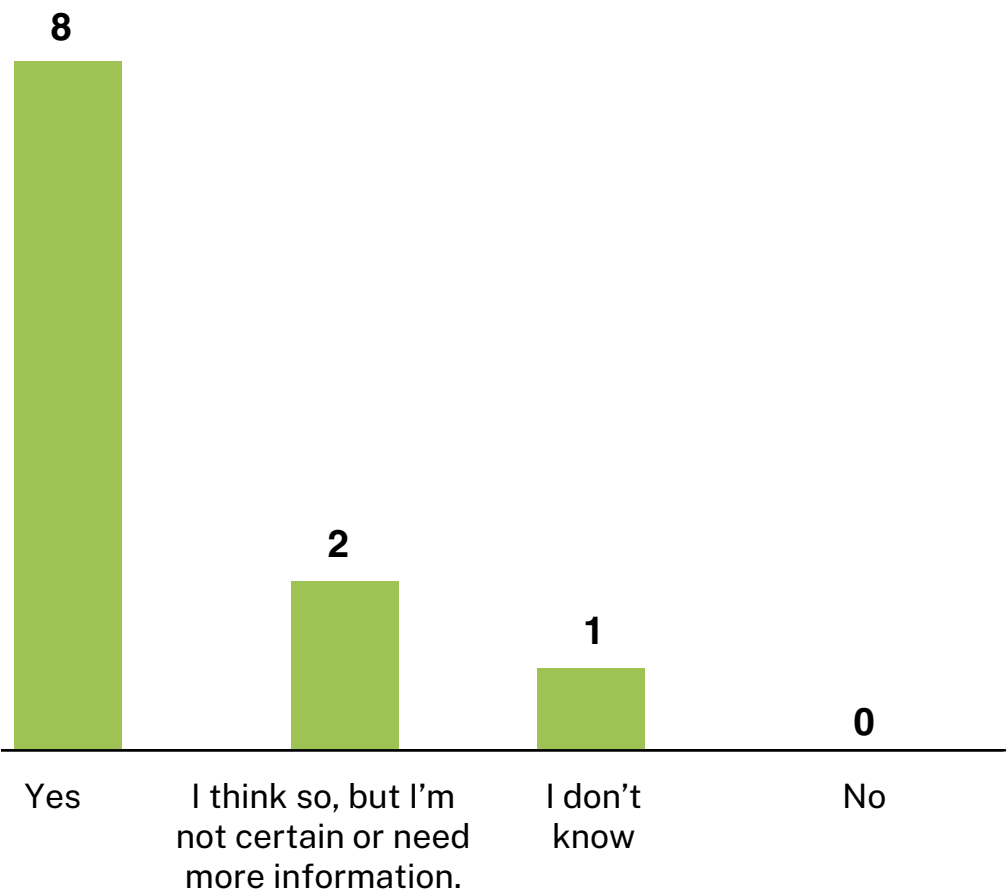
- +5
- +6
- +7



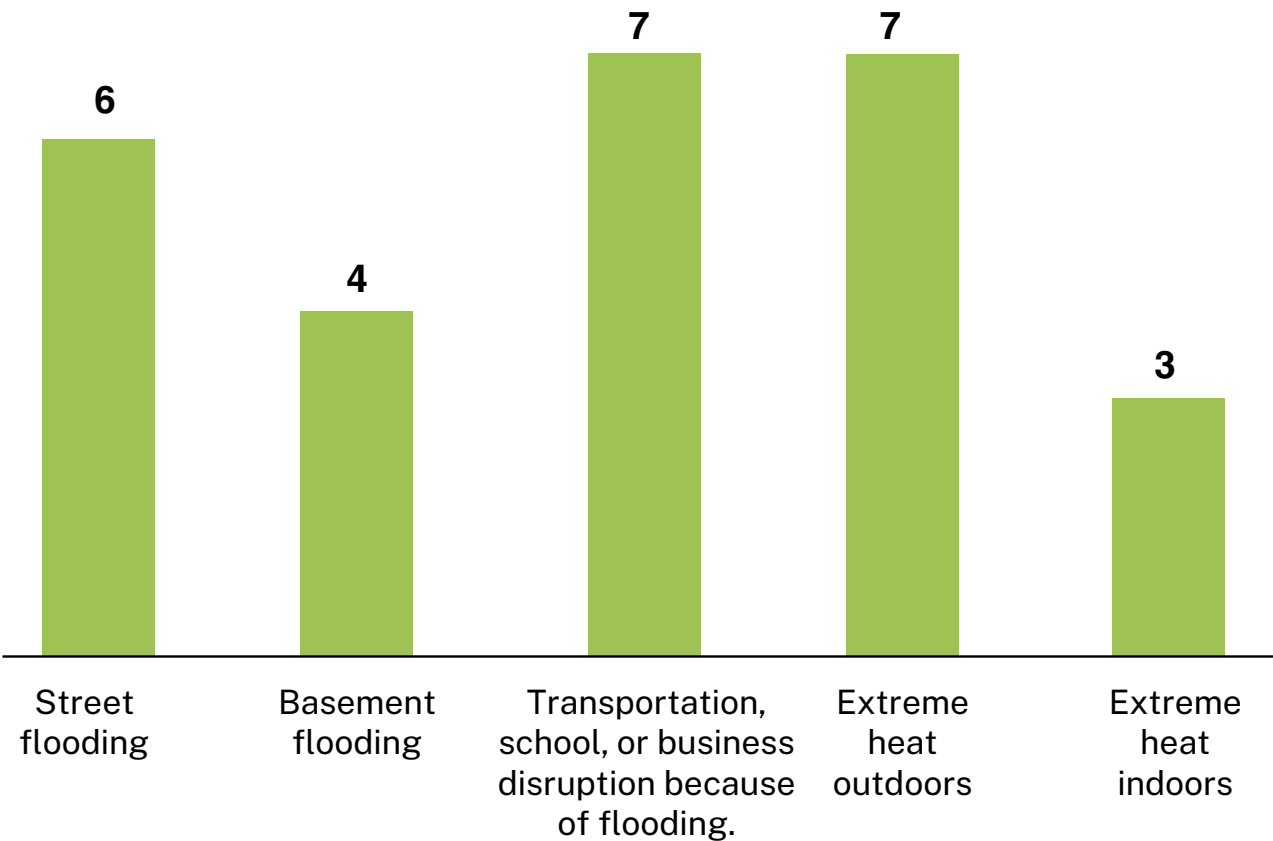
Public Engagement

What We've Heard

Climate change is impacting my neighborhood:



I have experienced the following climate change impacts or know someone in the neighborhood who has:



**13 total respondents as of 12/16/23*

Public Engagement Goals

Engagement will be centered in equity planning principles.

- Understand climate change through lived perspectives
- Prioritize most impacted populations
- Build long term trust and center neighborhood stories

Public Engagement Structure

Community Partner

- Strong ties to neighborhood
- Community based organization, faith based organization, or trusted institution
- Collaborate with CSC team to facilitate engagement

Neighborhood Support Team

- 5-8 members recommended by the community partner
- Knowledgeable about neighborhood issues and diverse stakeholders
- Provide feedback and input on community experience of climate risk
- Help set resilience priorities
- Help promote public workshops

Neighborhood Support Team



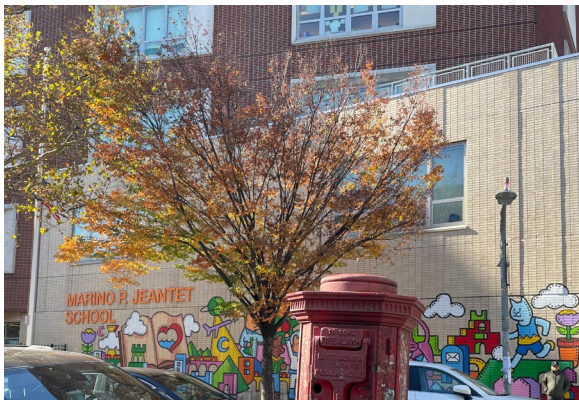
Corona Site Walk | 11/8/23



1. ROOSEVELT AVE



4. PARK OF THE AMERICAS



2. PS 19Q MARINO P JEANTET SCHOOL



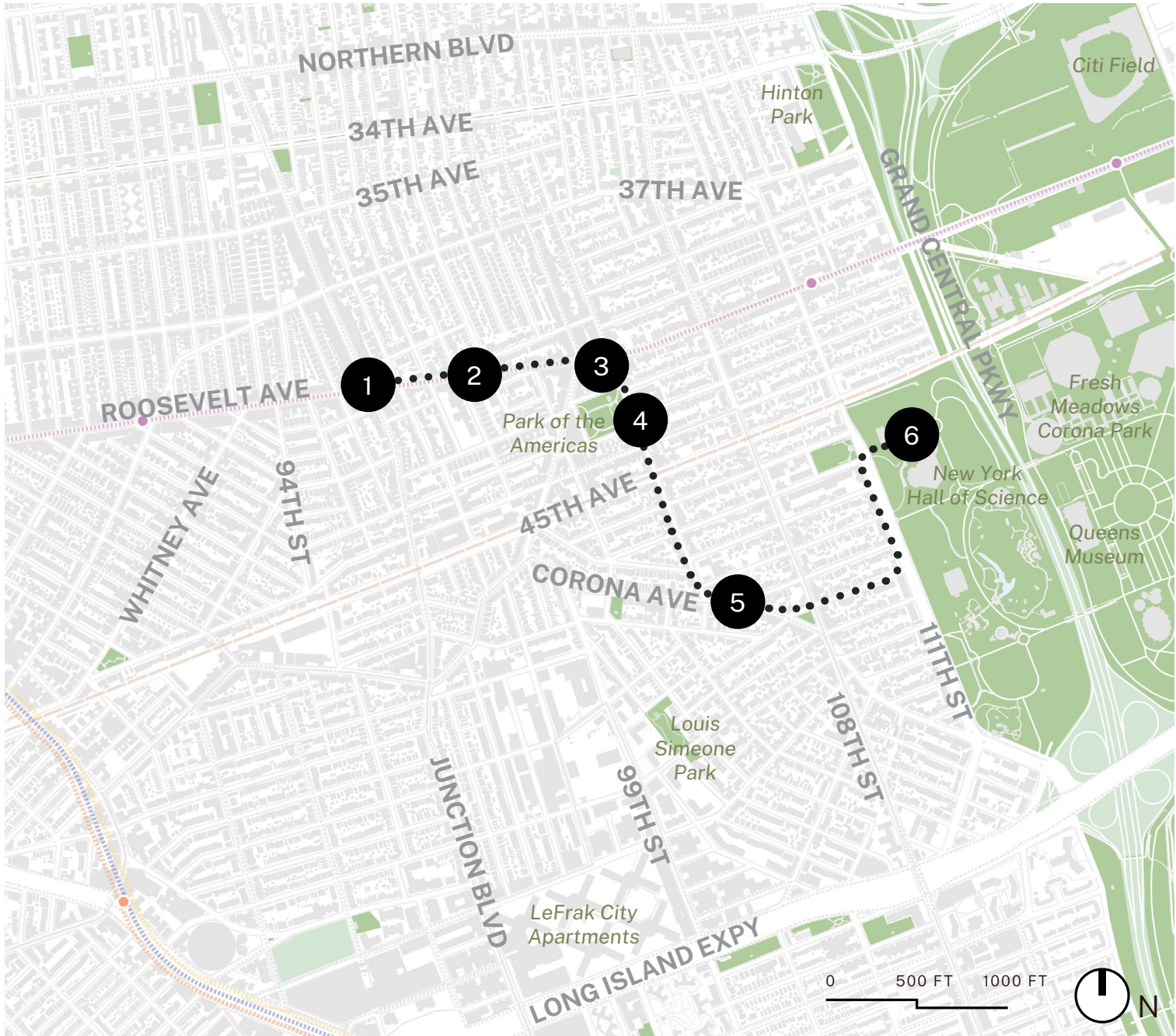
5. CORONA AVE



3. CORONA PLAZA



6. NEW YORK HALL OF SCIENCE



Public Engagement Schedule

1. Understanding Climate Risk

Fall 2023

Public Workshop

- Open to general public
- Build awareness of CSC program, discuss community perspectives, hazards, and risks

2. Introducing Potential Climate Change Projects

Winter 2024

Public Workshop

- Open to general public
- Discuss potential project typologies for future funding opportunities

3. Prioritizing Potential Projects and Funding Opportunities

Spring 2024

Public Workshop

- Open to general public in all CSC neighborhoods
- Discuss CSC experience

Climate Change

A photograph of a playground with a blue and yellow structure, a slide, and a water sprayer. Two children are on the slide, and a woman and another child are in the foreground. The image has a teal tint.

Climate Hazards



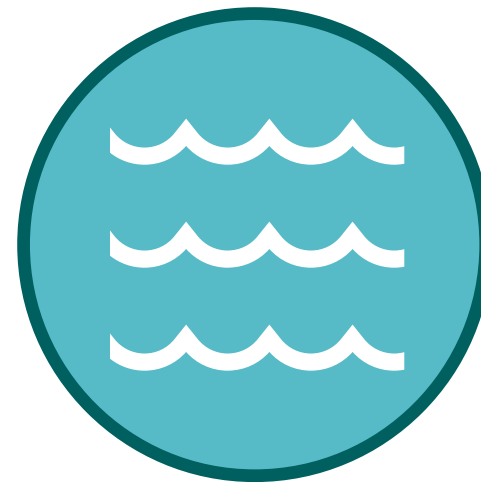
EXTREME HEAT

PROJECTED 4X MORE HEAT WAVES
BY THE 2080s



EXTREME RAINFALL

UP TO 22% MORE PRECIPITATION
BY THE 2080s



CHRONIC TIDAL FLOODING

UP TO 3.75 FEET OF SEA LEVEL RISE BY THE 2080s



COASTAL SURGE FLOODING

Climate Threats



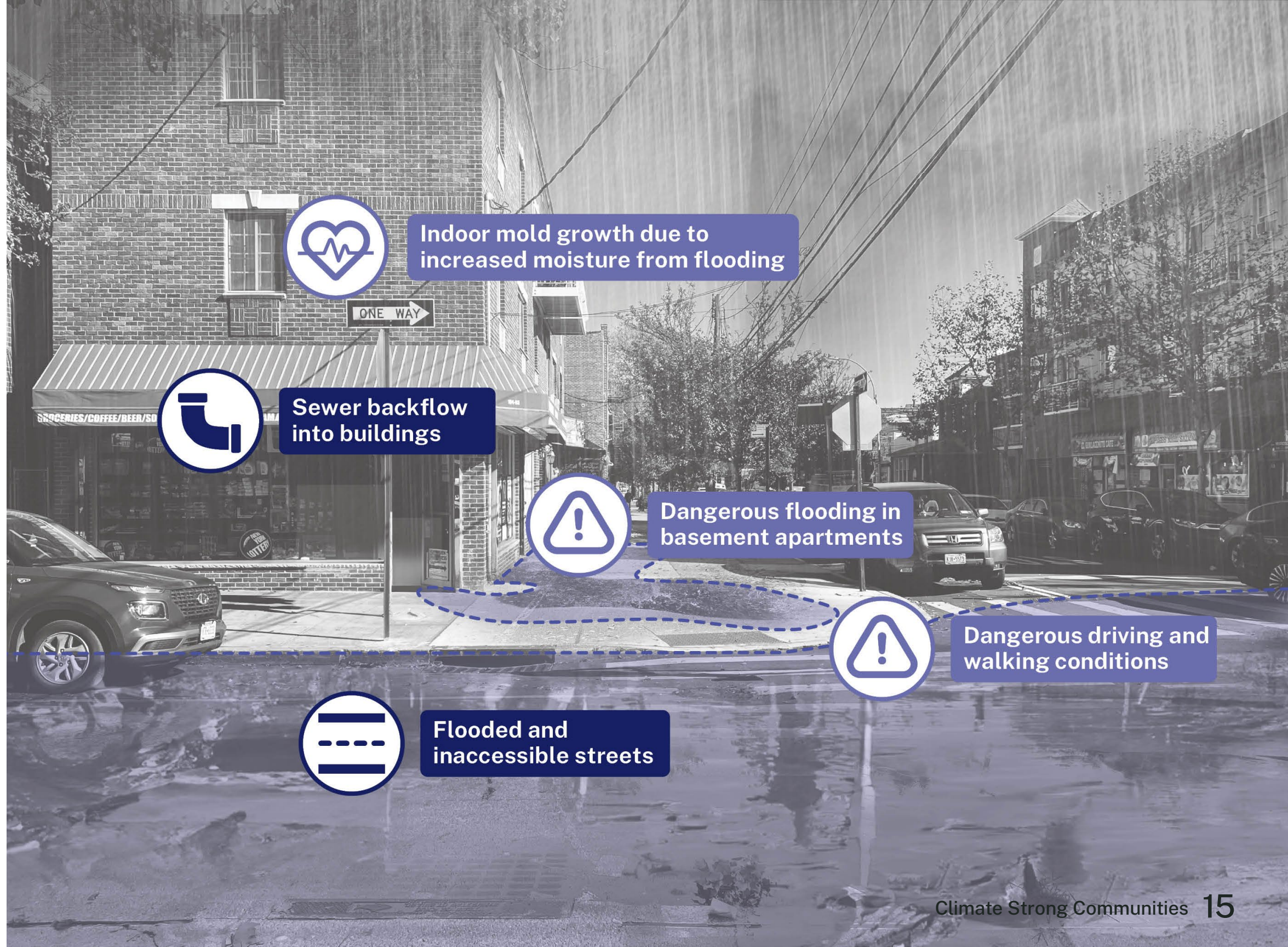
EXTREME HEAT



Climate Threats



EXTREME RAINFALL



Indoor mold growth due to increased moisture from flooding



Sewer backflow into buildings



Dangerous flooding in basement apartments

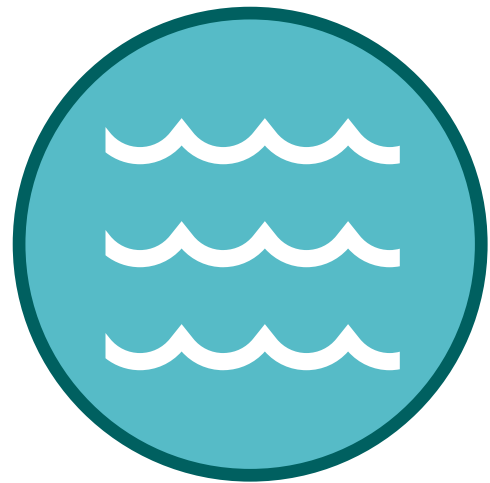


Dangerous driving and walking conditions



Flooded and inaccessible streets

Climate Threats



CHRONIC TIDAL FLOODING



Indoor mold growth due to increased moisture from flooding



Damage to homes and businesses



Loss of trees due to saltwater flooding



Regularly occurring flooding in the neighborhood



Damage to infrastructure due to saltwater flooding

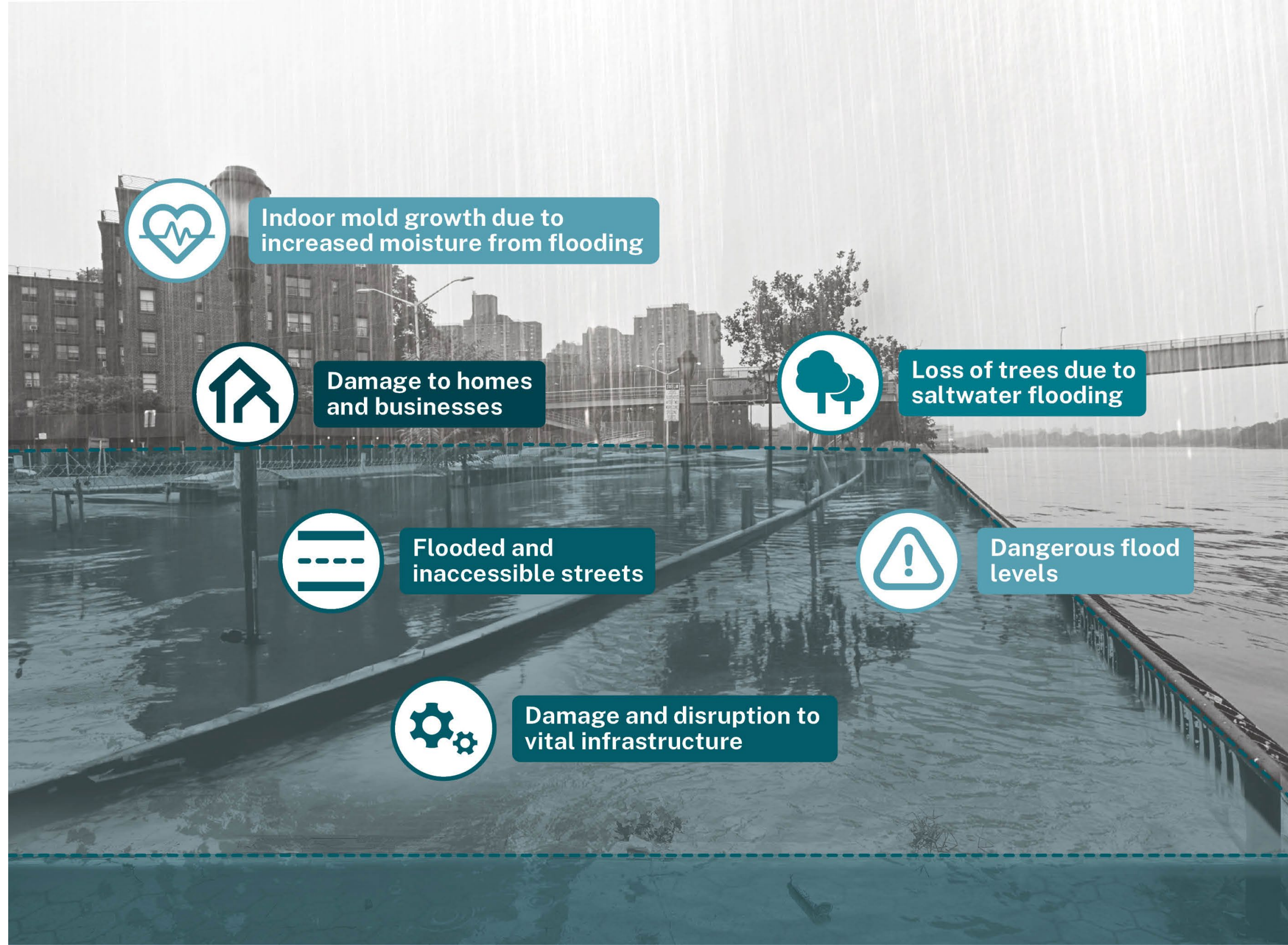


Chronic flooding in streets and public areas

Climate Threats



COASTAL SURGE FLOODING



Indoor mold growth due to increased moisture from flooding



Damage to homes and businesses



Loss of trees due to saltwater flooding



Flooded and inaccessible streets

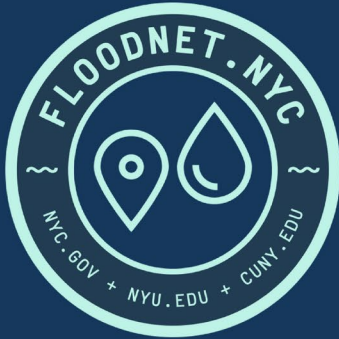


Dangerous flood levels



Damage and disruption to vital infrastructure

FloodNet.nyc



FLOODNET NYC

A NETWORK FOR REAL TIME URBAN FLOOD MONITORING AND COMMUNITY RESILIENCE

WHAT IS FLOODNET?

FloodNet is a cooperative of communities, researchers, and New York City government agencies working to better understand the frequency, severity, and impacts of flooding in New York City. We especially focus on neighborhoods that are vulnerable to high tides, storm surge, and stormwater runoff.



ACCESS OUR DATA.

Our data dashboard collects real-time data from our flood sensors and can be viewed at www.floodnet.nyc.



OUR FLOOD SENSORS.

Flood sensors monitor flooding in NYC neighborhoods. They collect information that is used by local residents, researchers, city agencies, and others to better understand how flooding impacts NYC communities. They are not cameras and do not collect identifying information.



HOW TO GET INVOLVED.

If you experience flooding in your neighborhood, send suggestions for potential sensor locations. **Contact us via our website:** www.floodnet.nyc



HOW TO STAY CONNECTED.

Talk with our Community Engagement Manager about the project, collaboration, or meetings with your team. **Email** info@floodnet.nyc **now!**



HELP COLLECT FLOOD DATA.

To submit a flood report with a photo, time, depth, location and impacts, download the 'MyCoast' app, register, and add a 'Flood Watch' report: mycoast.org/ny/flood-watch




WHO WE ARE.



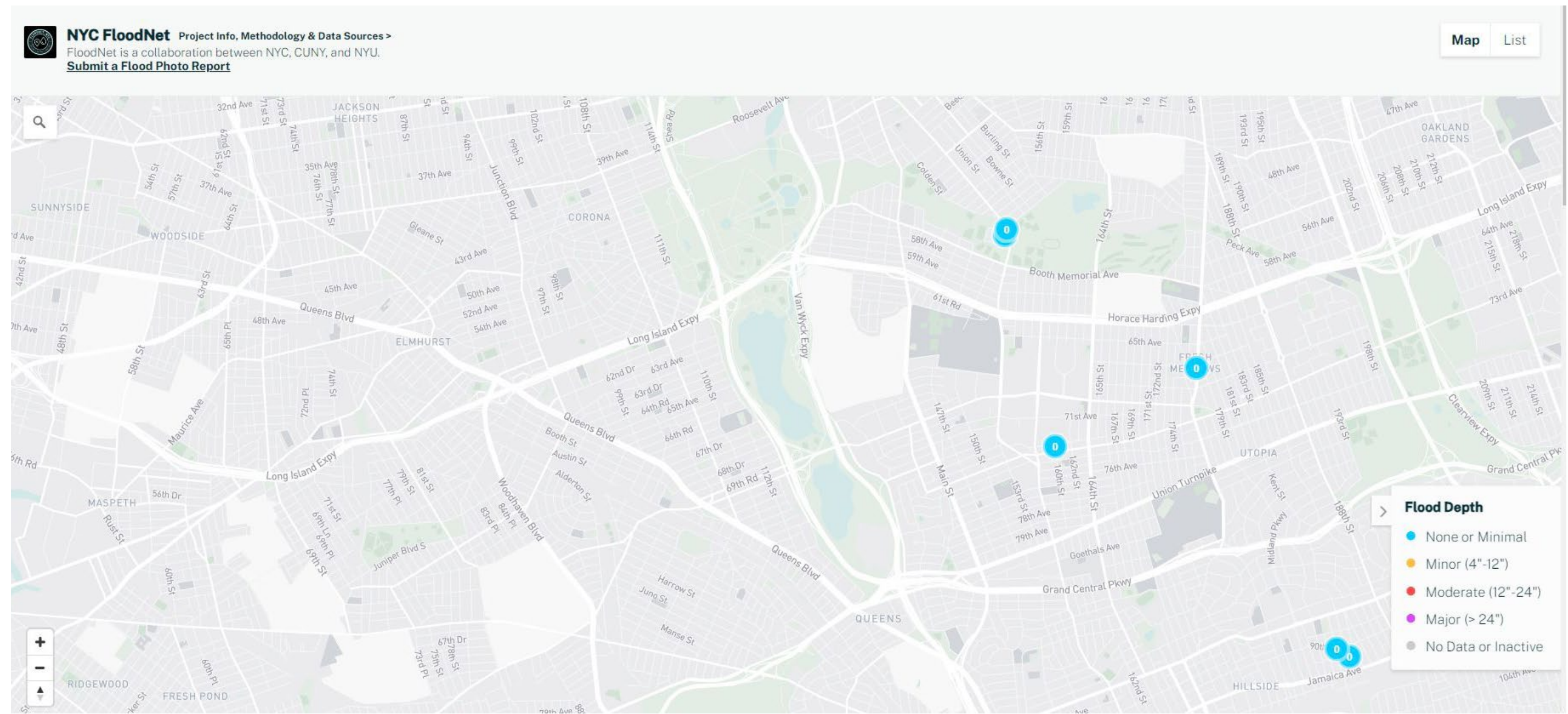
FloodNet began in 2020 as a partnership between academic researchers at NYU and CUNY, and NYC agencies, including the Mayor's Office of Climate & Environmental Justice, NYC Department of Environmental Protection, and NYC Office of Technology & Innovation.

QUESTIONS OR FEEDBACK?



 info@floodnet.nyc
 www.floodnet.nyc

FloodNet.nyc



Next Steps



The next public workshop will be held in late February - early March.

To stay in touch please contact:
ClimateStrongCommunities@cityhall.nyc.gov

To share this follow up survey please scan the QR code or visit: <https://bit.ly/47KgAdR>

The survey will be live until the end of January.

1

Neighborhood Story Activity

Discussion Questions

Goal: Understand what assets the community values.

- What are important spaces in the neighborhood? What are community assets? What public / community spaces see the most use? Why?
- Who do you turn to for information?
- What are important moments in the neighborhood's history?
- What is something you think the city doesn't understand about the neighborhood?

1

Climate Threats Activity

Discussion Questions

Goal: Understand the community perspective of climate risk.

- What climate impacts feel most relevant to this neighborhood?
- Who experiences these climate impacts?
- Is there a specific population most affected?
- Which community assets are impacted by climate change?
- Are there community-based initiatives that are addressing these climate impacts?



Thank You